



SCGSG Year 10 Information Evening

Tuesday 23rd September 2025



Year 10 Key Staff



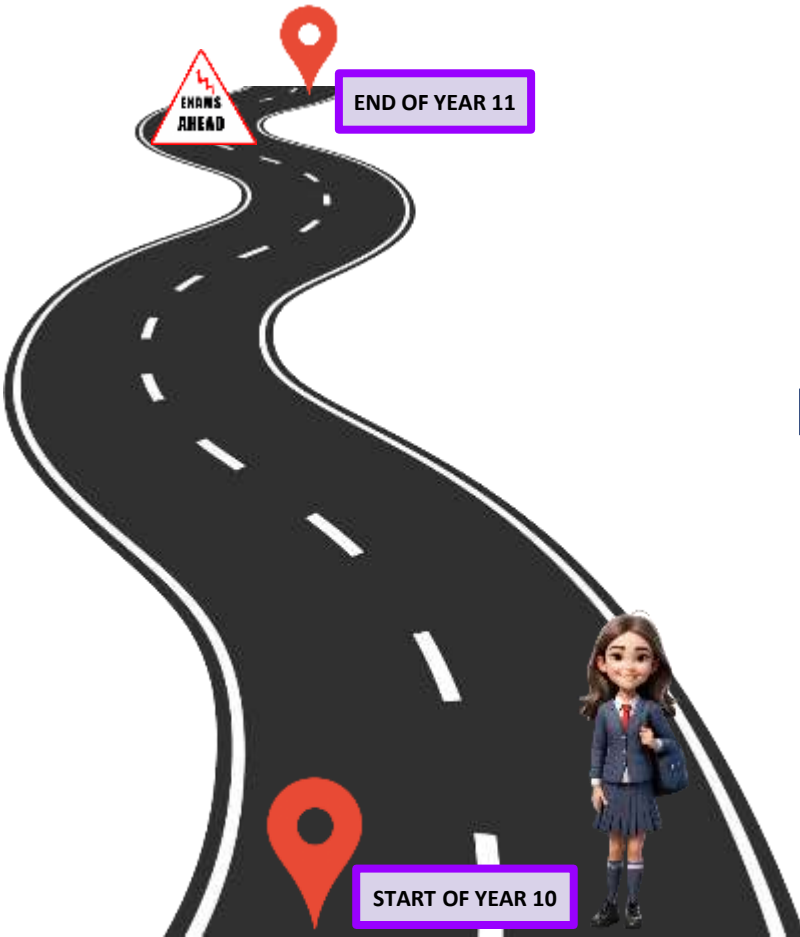
- Miss Homer (Head of Year)
- Mr Eaton (Deputy Head – SLT Link to Year 10)

• Tutors:	Mr Marriner/Mrs Hughes	10JMN	Aquila
	Miss Zannetou	10AZA	Cygnus
	Mrs Moya-Pugh	10IMP	Delphinus
	Mr Biggin	10DBI	Pegasus
	Miss Shearer/Mrs Buck/Ms Kauser	10JSH	Phoenix
	Mrs Clarke	10JCL	Ursa



Head of Year: Miss Homer

Your GCSE Journey



It is a **long** journey.

It is not a straight journey -
there will be **bumps** and
turns along the way.

It is **your** journey – try not to
compare yourself to others.

It is not your **only** journey.



How can I make my journey successful?



1. Have a **goal** – long or short term.
2. Build a strong **support** network
3. Be **positive** and **resilient** to difficulties when they come.
4. Consider your **time management** – this includes time for hobbies, socialising, relaxing, etc.
5. Remember... this is **your** journey!

A motivational graphic on a yellow background. The text 'STAY POSITIVE' is in blue, 'WORK HARD' is in purple, and 'MAKE IT HAPPEN' is in teal. The text is decorated with orange and yellow lines and dots. There are also two purple arrows pointing downwards from 'WORK HARD'.

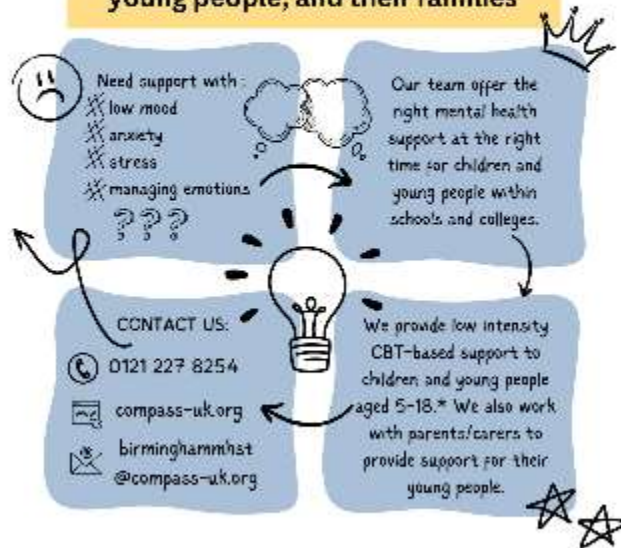
How can I support my child's mental health?



Compass
Birmingham
Mental Health Support Teams



Mental health support for children,
young people, and their families



*Up to 25 years old per care leavers with special education needs or disability

Instagram: @CompassBHMST Email: @CompassBHMST Facebook: @CompassBHMST

Better Health
every mind matters

YOUNGMINDS

TWR
THE WAITING ROOM

Birmingham and Solihull Health & Wellbeing services at your finger tips

THE MIX



(House) Character Points



Attendance



Minister warns parents on school attendance ahead of new term



Bridget Phillipson told the BBC that the start of the year was a crucial time for pupils and parents



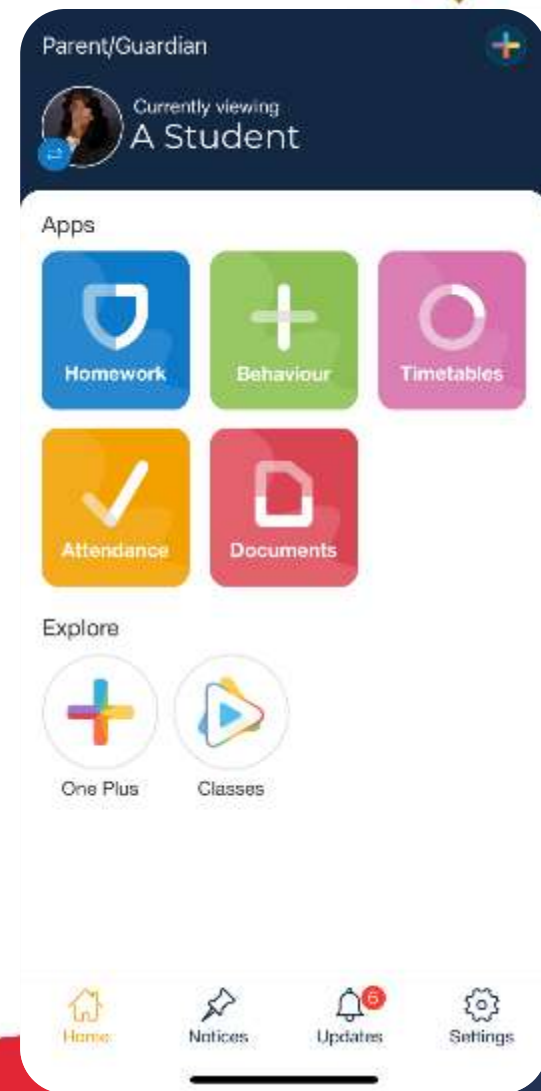
Attendance by numbers

- Attendance in Year 9 last year: 95.8%
(National Average: 91.4%)
(Average of similar schools: 94.4%)
- 8 days missed per student. 40 Lessons missed per student
(7200 lessons missed in our year group)
- Every school day counts

Satchel:One



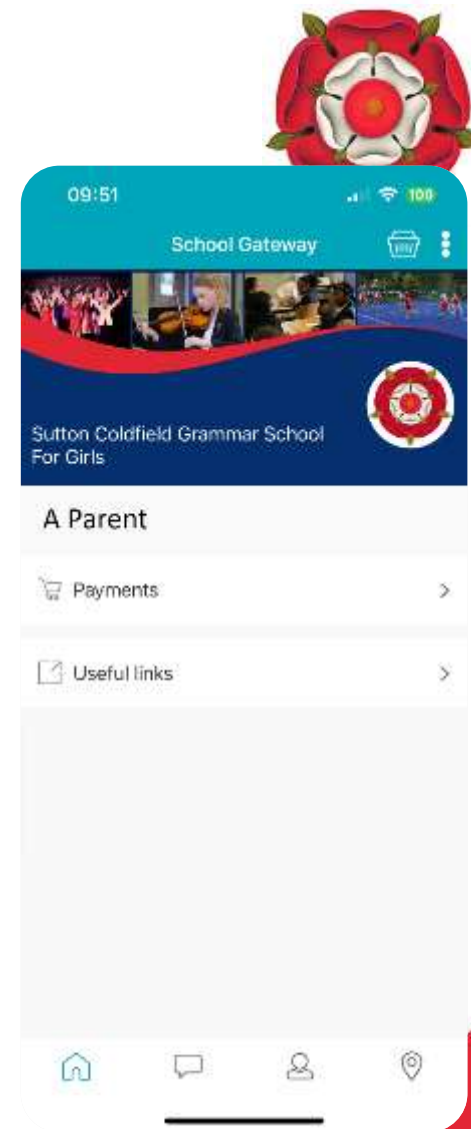
- **Your** access to see information about your child at school.
 - Timetable
 - Homework
 - Character Points/Behaviour
 - Attendance
 - Progress Reports
- Sign up using the information in your pack.
 - “Parent code” is unique to your child
 - Please set up your parent account
- We monitor engagement throughout the year



School Gateway



- Thank you for supporting the move across to the new system
- Payments for lunches, trips, etc. via the app.
 - More efficient communications link
 - Builds a timeline of communication



Growth Mindset

'I can not do that ...yet.'



Deputy Headteacher Curriculum & Assessment

Mrs Downing

Subject overview



Year 10/11

Lessons per fortnight	English	Maths	Biology	Chemistry	Physics	Core PE	Option A	Option B	Option C	Option D	Personal Development
Year 10	8	7	4	4	4	2	5	5	5	5	1

2025 26 – KDG HWK expectations

Year 10/11	45 - 60 minutes per GCSE subject per week
------------	---

Retrieval practice is important.
Do a homework timetable.

Student Links

Satchel:One

Votes for Schools

Extra-curricular Schedule

Library System

Houses

Examinations

Microsoft 365

Bring Your Own Device

Follow-Me Printing

Subject Resources

Contact IT Support

Pearson Revise

School Prospectus

Term Dates

Open Events

School Day Timings

Catering at SCGSG

Statutory Information

SEND Information

Safeguarding and Prevent

Mental Health and Wellbeing

School Policies

Pupil Premium

Examination Results

Ofsted Report

Student Links

Parent Links

Staff Links

Teacher Training

School Uniform

School Prospectus

Term Dates

Open Events

School Day Timings

Catering at SCGSG

Statutory Information

SEND Information

Safeguarding and Prevent

Mental Health and Wellbeing

School Policies

Pupil Premium

Examination Results

Ofsted Report

> **Student Links**

Parent Links

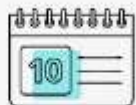
Staff Links

Teacher Training

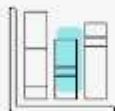
School Uniform



Resources



[View Revision Planner](#)



[Add Subjects](#)

A free resource for our student.

Access via the student section of our website.

Your GCSE Subjects

AQA

GCSE
English Language

Pearson Edexcel

GCSE
Mathematics Higher

AQA

GCSE
Biology Higher

AQA

GCSE
Chemistry Higher

AQA

GCSE
Physics Higher

AQA

GCSE
History: Conflict and Tension between East and West, 1945-1972

AQA

GCSE
History: Elizabethan England, c1568-1603

AQA

GCSE
French (2025 exams)

Headline figures at GCSE 2025



Grade 9 = 36%

Grade 9/7 = 83%

APS = 7.8

Old Grades

A*

A

B

C

D

E

F

G

U

New Grades

9

8

7

6

5

4

3

2

1

U

Grade 7 or above

Independent study (Year 7-13)

B - Below expectations	MM - Mostly meeting expectations	CM - Consistently meeting expectations	EE - Exceeding expectations
Independent work has not been completed on numerous occasions. Establishing clear systems and increased effort is essential to improve in this area and support their consolidation of learning.	Independent work is completed to an acceptable standard but is not always submitted by the given deadline. Establishing clear systems to help with organisation is required.	Independent work is always completed on time to a high standard. Your child has demonstrated good systems and consistent effort in completing homework or other independent tasks.	Independent work is always completed on time, consistently surpassing expectations with exceptional quality.



Reports

This year they are more streamlined.


Track through every year group:

1. Independent study
2. Approach to Learning
3. Progress

Approach to learning (Year 7-13)

B - Below expectations	MM - Mostly meeting expectations	CM - Consistently meeting expectations	EE - Exceeding expectations
Your child is not yet meeting expectations of engagement, participation, and effort in this subject. It is important for them to take a more active role and strengthen their systems and organisation to improve their performance.	Your child is mostly meeting expectations of engagement, participation and effort in this subject. Improvement is now needed to further embed strong systems and study strategies.	Your child is consistently meeting expectations of engagement, participation and effort in this subject. Their effective systems enable a clear readiness for learning.	Your child demonstrates a genuine curiosity and passion for the subject. They consistently go above and beyond expectations in terms of engagement, participation, and effort, both inside and outside of the classroom.

Progress Statements



	Working towards expected outcomes	Working at expected outcomes	Working beyond expected outcomes
Autumn Year 10	Your child is not yet making the expected progress within this course.	Your child is achieving the expected progress for this point within the course.	Your child is exceeding the expected progress.

Year 10 Spring Year 11 Autumn	Students will receive 'forecast' GCSE grades on reports.
Year 10 Summer Year 11 Spring	Students will receive 'forecast' GCSE grades on reports alongside written comments.

[Assessment & reporting at SCGSG](#)





Mathematics Year 10	Working towards expected outcomes Your child is not yet making the expected progress within this course.	Working at expected outcomes Your child is achieving the expected progress for this point within the course.	Working beyond expected outcomes Your child is exceeding the expected progress.
Autumn Term	<p>Students working towards expected outcomes in Y10 can:</p> <ul style="list-style-type: none">• Expand up to three brackets• Factorise quadratics of the form $x^2 + bx + c$ and recognise basic cases of DOTS e.g. $x^2 - 9$• Simplify simple surds (e.g. $\sqrt{50}$)• Use Pythagoras' theorem in 2D problems• Apply SOHCAHTOA in basic right-angled triangles• Combine basic trigonometry and Pythagoras to use in simple compound diagrams.• Recall and sketch the three trigonometric graphs.• Recall some exact trigonometric values.	<p>Students working at expected in Y10 can:</p> <ul style="list-style-type: none">• Add and subtract multiple sets of brackets accurately.• Complete the square for quadratics• Solve quadratics using all three methods (factorising, completing the square, formula)• Use their quadratic skills to form expressions and equations for typical 'show that' questions.• Rationalise denominators including those with 2 terms in the denominator.• Use surds in context (e.g. finding an area where lengths are in surd form).• Apply trigonometry in 2D and 3D problems and use exact trig values• Understand basic trig graphs and solve simple trig equations, including those requiring some rearranging. Eg. $2 \cos x = 1.2$	<p>Students working beyond expected in Y10 can: In addition to the skills listed under 'Working At' for this topic, students working beyond expected outcomes can:</p> <ul style="list-style-type: none">• Factorise more complex quadratics including those that can be factorized by taking out a group of terms.• Complete the square for ax^2 style quadratics• Tackle more demanding "Show that" questions involving quadratics• Manipulate surds fluently and accurately in a variety of question styles including application.• Use known trig values in non-calculator questions.• Solve multi-step 3D trig problems involving bearings and angles between planes• Solve trigonometric equations where the principal value might not fall into the required range. Eg. $\sin x = -\frac{1}{2}$ for $0 < x < 360$

Year 10 – The year ahead



GCSE Curriculum information



Sutton Coldfield Grammar School for Girls

Parents

St

Home

Our School

News & Events

Curriculum & Enrichment

Sixth Form

School Information

Joining S

Year 7-9 Curriculum

SCGSG Curriculum (Years 10-13)

Super-curricular

Extra-curricular Opportunities

Music Education

Careers

Personal Development

SCGSG Library

House System

Duke of Edinburgh's Award

School Examinations

Remote Education

"A positive, inclusive environment that allows students to reach their full potential."





You will see a new tab for each subject.
Within each subject page you will find:

1. An overview of the subject written by each Head of Department.

2.

Curriculum Overview

GCSE Information

A-Level Information

3. Progress statements. These can be visited anytime to self reflect and you will be directed to use them to support the reports you receive over the year.

Year 10 Mathematics Progress Statement	PDF file	Download ↓
Year 11 Mathematics Progress Statement	PDF file	Download ↓
Year 12 Mathematics – Applied Maths	PDF file	Download ↓

Mathematics



Year 7

Algebra: Rules of algebra, Substitution, Simplifying, Solving linear equations, Devising equations from a given context, Factorising, Arithmetic sequences

Number: Powers, Roots, Negative numbers, Rounding and estimation, Factors, Multiples, Divisibility tests, Ratio and proportion, Use of a calculator

Geometry: Shape and solid properties, Angles, Nets, Metric units, Constructing triangles Perimeter and Surface area, Volume

Probability: Probability scale, Equally likely outcomes, Lists and Sample spaces

Statistics: Averages and spread. Compare and contrast data

Year 8

Number: and proportion: Standard form, converting time and using timetables. Finding percentages and increase/decrease using decimal multipliers. Ratio within a ratio. Proportion of a quantity. Best value problems.

Algebra: Solving harder linear equations, Expanding double brackets, Factorising quadratic expressions, Substitution of negatives. Changing the subject. Plotting linear graphs, use of $y=mx+c$. Plotting curved graphs. Real life graphs including distance-time graphs. Further sequences: rules of arithmetic sequences and spotting quadratic sequences

Geometry: Pythagoras theorem, Area and circumference of a circle, Angles in polygons. Volume of prisms. Compound measures.

Statistics: Averages. Scatter graphs and correlation

Year 9

Number: Reciprocals and rule's of indices, Error in measurement. Surds.

Proportion: reversing percentage change. Harder reasoning with ratio

Algebra: Expanding triple brackets. Factorising quadratics inc DOTs. Parallel and perpendicular lines. Simultaneous equations. Linear inequalities. Exponential curves.

Geometry: Trigonometry, Bearings, Transformations. Similar triangles. Volume/Surface area of cones, pyramids and spheres.

Probability: Frequency Trees and probability trees

Statistics: combined means, quartiles and box plots

GCSE Edexcel - 1MA1

Year 10

Number and Proportion: Rounding and truncation. Rationalising the denominator. Ratio and equations. Repeated percentage change. Direct/indirect proportion.

Algebra: Factorising non-monic polynomials, completing the square. Quadratic inequalities. Proof. Harder changing the subject. Changing the base of indices. Equation of a circle and finding the tangent to a circle

Geometry: Trig graphs and equation. Sine and Cosine rule. Circle theorems. Arc and Sectors. Probability: Generalised probability.

Statistics: Cumulative frequency

Year 11

Number and proportion: Estimation in context. Unit and compound measure conversion.

Algebra: Functions, Sequences. Gradients and areas. Solving equations graphically. Iteration. Exponential form

Geometry: Vectors, Geometric proof. Construction and loci.

Statistics: Histograms, sampling and bias

A-Level Edexcel - 9MA0

Year 12

Pure: Hidden quadratics, the discriminant. Exponentials and logs, Natural logarithms. Binomial expansion. Vectors: Differentiation and Integration of polynomials. Graphs and Transformations. Trig identities and equations. Circle geometry. Factor theorem and proof. Radians Sequences and Series

Statistics: Probability. Binomial distribution. Hypothesis testing. Measures of data and correlation

Mechanics: motion with constant and variable acceleration. Forces and Friction.

Year 13

Pure: Reciprocal trig functions. Trig: Addition formulae, double angles and Harmonic form. Differentiation on non-polynomial functions. Parametric equations. Integration. Solving differential equations. Proof. Partial Fractions. Functions. Vectors. Numerical Methods. Binomial expansion.

Statistics: Regression, correlation and hypothesis testing. Probability and Set notations. The Normal distribution

Mechanics: Moments, Projectiles. Variable acceleration

Subject overview (road map).

Super curriculum and Extra curricular



Podlet

H Brown + 2 x 8mo

Geography super-curricula

Sign up

External Competitions

The Geological Society 2025 Schools challenge competition (A-level)

geolsoc.org.uk

The Geological Society of London

0

Geographical Association physical Geography photo competition

geography.org.uk

Physical geography student photo competition - Geographical Association

Sorry, we could not get a preview for this attachment.

Internal Competitions

KS4 inter-house geography quiz

SIGN UP!

Attend our house quiz for KS4. Rounds include physical geography, human geography, map skills, general knowledge & fieldwork

0

KS3 inter-house geography quiz

Geography interhouse quiz

0

Lectures

Gresham Lectures

gresham.ac.uk

Watch Now

Gresham College, founded in 1597, exists to disseminate knowledge by providing free public lectures. You can view past lectures on their website – recent highlights include 'Are video games bad for children?', 'Is human evolution over?' and 'When galaxies collide'.

0

Guest Lecturer

What is a Refugee

0

Climate conference

Climate conference 2024

Climate Conference 2024

0

Climate conference 2023

Climate Conference 2023

0

Geography-related careers

Work Experience Programmes

springpod.com

Virtual Work Experience Search

0

Ordnance Survey Virtual Work Experience | OS

ordnancesurvey.co.uk

0

Climate Conference Poster 2024

Climate Conference Poster 2024

0



Deputy Headteacher

Mr Eaton

Personal Development



Personal Development is a whole school programme for all years and includes:

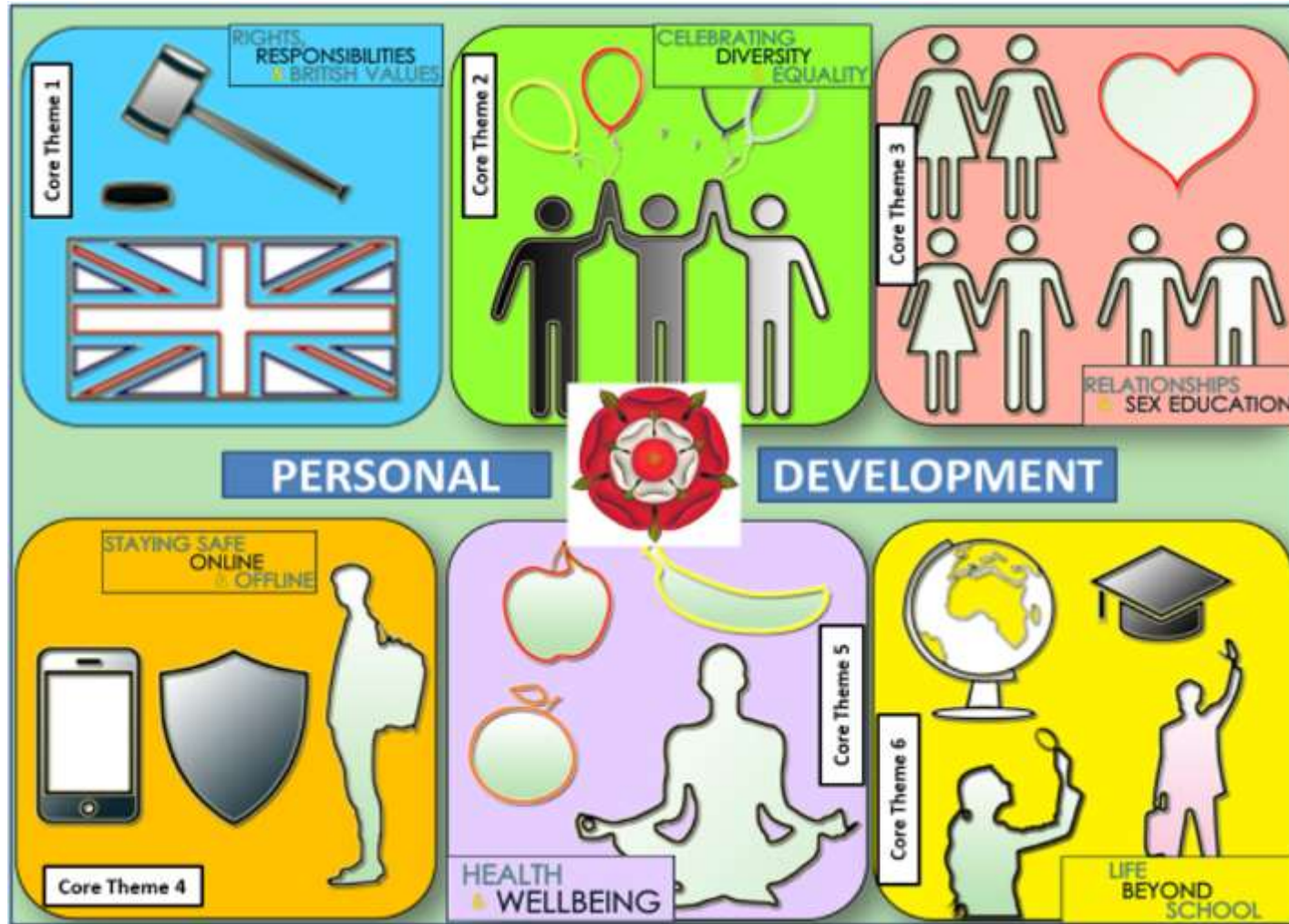
- PSHE
- Health Education
- Relationships and Sex Education
- Character Education
- Careers
- Citizenship
- British Values

PD is delivered in Year 10 through timetabled lessons, once per fortnight.

Personal Development



Within the PD programme, there are 6 Key Themes:





Further Opportunities at Sutton Girls

- Year 10 – Silver DofE Award
- Year 10 – Experience of the workplace/Careers Fair
- Year 11 - National Citizen Service (NCS)
- Year 12 - Work Experience
- Year 12 - Gold Duke of Edinburgh Award
- Year 12 - London/Oxford Residential
- Year 12 - CERN Residential
- Year 12 – World Challenge



Silver DofE



YOUTH
WITHOUT
LIMITS

START
YOUR SILVER
DOFE

WATERBURY
Motorists
Don't leave
your car
unattended

What is the DofE?

The DofE is a life-changing adventure.

You make it: The DofE is as unique as you are

Millions of young people in the UK have already done their DofE.

Now it's your turn.



**YOUTH
WITHOUT
LIMITS**



What will I do?



Your Welcome Pack and eDofE



Your role

Guidance

Encouragement

Practical support

Recognising achievement



**YOUTH
WITHOUT
LIMITS**



Getting started

Are you ready to start an adventure you'll never forget?

To get started with your Silver Award, look out for information on the Year 10 Team.



**YOUTH
WITHOUT
LIMITS**



The DofE is a charity.

Visit DofE.org for more information.

The Sutton Coldfield Grammar School for Girls Charity



The Charity is mainly funded from parental donations and plays a key role in improving the student experience

In the last 12 months The Charity has donated £25k to the School. Items funded include:

- New School Minibus
- Wall Art to celebrate school values
- New equipment for Creative Subjects
- Extra-Curricular Trips





How can parents/carers help?

- Sign up for regular monthly donations to the School fund via our donation page using the link via the website below or QR Code below

www.suttcold.bham.sch.uk/schoolcharity

- Share your expertise with us
- Offer company sponsorship



For more details, please contact the Finance and Operations Director: finance@suttcold.bham.sch.uk



Help Your Parents Association

The Parents Association is always in need of Volunteers to help support school events and fundraise

If you would like to help please contact us via the following links:

Email: pa@suttcold.bham.sch.uk

Or via the QR Link below



Forthcoming Events

- **NEXT EVENT – YEAR 7 FILM NIGHT**
- **HOW TO TRAIN YOUR DRAGON**
- **QUIZ NIGHT – FRIDAY 17TH OCTOBER**
- **CHRISTMAS FAYRE FRIDAY 5TH DECEMBER**
- **PLUS MORE TO BE ANNOUNCED LATER IN THE YEAR**





Things to do

- Check data sheet and return before you leave
 - Priority 1 & 2 contact details
- Read & sign Home-School Agreement
- Continue to engage with Satchel:One information
- **E1 – Aquila (10JMN)**
- **E2 – Phoenix (10JSH)**
- **E3 – Delphinus (10IMP)**
- **E4 – Cygnus (10AZA)**
- **E5 – Pegasus (10DBI)**
- **E6 – Ursa (10JCLASH)**



THANK YOU!